



---

## COMPANY PROFILE

2025 - 2026

Modular Toilet Cubicles Changing Rooms Shower Rooms

Pole Door · Urinal Partitions Aluminium Sections

# Interior Solutions

---

We are सक्षम in work

Smart Partition Solutions  
for Smarter Restrooms

**Nisha Jaiswal**

 +91-9757054670

 nishainteriorsolutions@gmail.com

 [cubicleinteriorsolutions.com](http://cubicleinteriorsolutions.com)

IN Made in India · Pan India Service

# COMPANY OVERVIEW

Interior Solutions is pleased to offer a turnkey solutions for **Modular Toilet Cubicles, Changing Rooms, Shower Rooms, Pole door and Urinal Partition** using HPL 100% waterproof, fire Resistance, antibacterial and high-quality which is made in India. Interior Solutions gets the work done by their experience Capable Installers who specialized. Interior Solutions Never Compromise on quality so they use best quality hardware as per the Clients Requirement.

Our specification team assists with design and selection of suitable product, finishing schedule preparation.

## **MISSION**

To provide you modular products by converting your dreams into reality.

## **VISION**

To provide Toilet Cubicles that creative, unique & customized designs yet providing high quality materials that makes you proud.

# WHERE WE USED



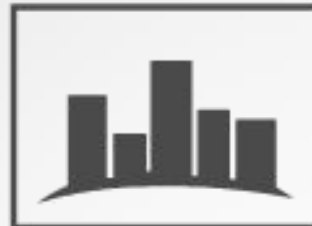
Schools &  
Kindergarten



Restroom  
Cubicles



Restaurants



Malls &  
Multiplexes



Changing  
Rooms



Lockers



Hospitals



Airports



Railway Station  
&  
Bus Station



Laboratories



Partitions



Office &  
Corporate  
Complexes



Stadium &  
Sports Complexes

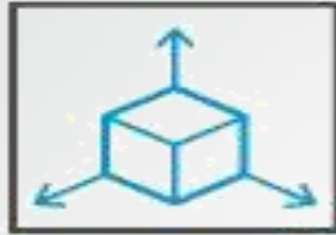
# ADVANTAGES OF BOARD



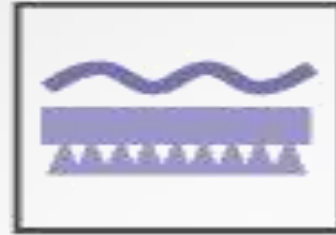
Anti Bacterial



Excellent Self Supporting Feature



Greater Dimensional Stability



Abrasion Resistant



Water Resistant



Flame Retardant



Impact Resistant



Easy to Assemble



Hygienic



Resistant to harmful chemicals



Low Emission of Gases



Scratch Resistant



Resistance to Microbial Growth



Easy to Clean



Horizontal/ Vertical Application



Heat Resistant



Decorative

# CERTIFICATES



# MODULAR CUBICLE PARTITIONS

We specialize in premium toilet cubicle and partition solutions for residential and commercial spaces. Manufactured with 12–18 mm compact laminate, multi-layered Kraft paper, and phenolic resins, our cubicles are durable, hygienic, and easy to maintain. Available in a variety of attractive finishes, they feature anti-fungal and anti-bacterial coatings, ensuring safety and cleanliness. Designed for quick installation, our systems use high-quality stainless steel and aluminum fittings (Jindal & Hindalco brands) for long-lasting strength and reliability.



**Pan India  
Work**

**12–18mm  
Board**

**10 Year  
Warranty**

<p><b>PVC Floor Mounted Cubicle Stud / Standard Series</b> Adjustable nylon legs on floor. Most popular &amp; economical. Works with any ceiling type. Fast installation.</p>	<p><b>Ceiling Hung Cubicle Suspended Series</b> Suspended from RCC slab above. No floor legs. Premium look. Easy floor cleaning. Best hygiene.</p>	<p><b>Floor to Ceiling Cubicle Full Height Series</b> Panel fixed from floor to ceiling. Maximum privacy. No gap at top or bottom. Complete enclosure.</p>	<p><b>Shoe Box Cubicle SS Box Up Series</b> Panel above the door — like a box. Extra privacy at top. No gap above door. Modern look.</p>
<p><b>Shoe Box Cubicle Nylon Box Up Series</b> Panel above the door — like a box. Extra privacy at top. No gap above door. Modern look.</p>	<p><b>Stainless Steel Series SS 304 / SS 316</b> Full SS panel cubicle. Rust proof. Heavy duty. Best for coastal areas &amp; high humidity spaces</p>	<p><b>Kids Cubicle Series</b> Low height — child friendly Lower height panels. Bright colours. Rounded safe edges. Anti-bacterial. Designed for children</p>	<p><b>Without Top Rail Cubicle Open Top Series</b> No top rail used. Clean minimal look. Open at top. Cost effective. Quick installation</p>
<p><b>Urinal Partitions</b> Fixed directly on wall with SS brackets. Space-saving design. Water resistant. Easy cleaning. Modern restroom appearance</p>	<p><b>Pole Door (PD Door)</b> D-shape aluminium pole Door supported by D-shape aluminium pole. For renovation projects with existing masonry walls.</p>		
<p>Aluminium skirting profile</p>	<p>Stick skirting profile 60 &amp; 80mm</p>	<p>ALUMINIUM L SECTION (CORNER PROFILE)</p>	<p>ALUMINIUM HAT SECTION</p>
<p>TRIM PROFILE SS AND ALUMINIUM BOATH</p>	<p>Project list</p>	<p>Contact details</p>	

# NYLON CUBICLE PARTITIONS



## SPECS

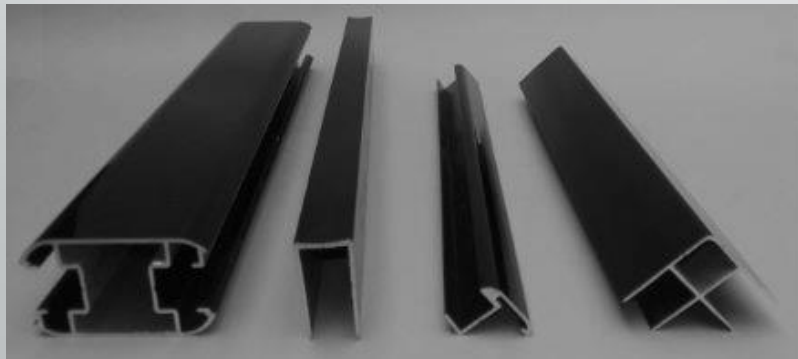
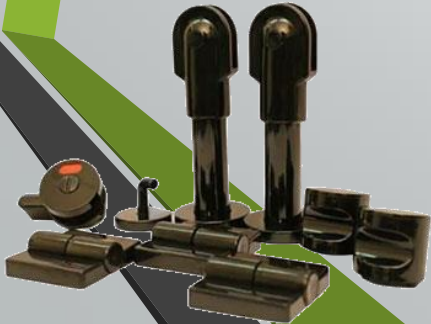
- ✓ Hardware: Nylon Polyamide (PA6)
- ✓ Rust-free & Moisture Resistant
- ✓ Suitable for Wet Areas & High-Traffic Washrooms
- ✓ 3 Self-Closing Hinges with Indicator Lock & Coat Hook
- ✓ Adjustable Legs: 100–150 mm

## Structure:

- Powder Coated / Anodized Aluminium Top Rail
- Aluminium H/U/F Profiles
- Floor Mounted & Wall Supported System

## Standard Sizes:

- (D X W X H – 1200 X 900 X 2000)
- Bottom Gap: 150 mm
- ✓ Cost-Effective & Fast Installation
- ✓ Custom Colors & Design Options Available





# CEILING HUNG CUBICLE

## **SPECS**

- ✓ Hardware: Stainless Steel
- ✓ Rust-free & Moisture Resistant
- ✓ Suitable for Wet Areas & High-Traffic Washrooms
- ✓ 3 Self-Closing Hinges with Indicator Lock & Coat Hook
- ✓ Adjustable Legs: 100–150 mm

## **Structure:**

- Powder Coated / Anodized Aluminium Top Rail
- Aluminium H/U/F Profiles

## **Headrail Supported Toilet Cubicle**

Premium wood finish compact laminate cubicles with heavy-duty aluminium profile for superior strength, stability & elegant appearance.

Custom Colors & Design Options Available

**SIZES ARE CUSTOMIZED**

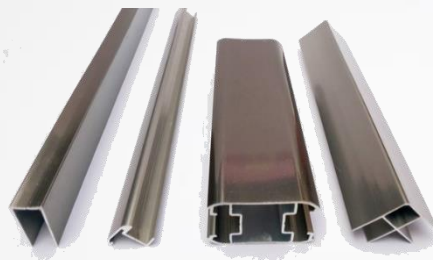
# FLOOR TO CEILING CUBICLE



## **Floor to Ceiling Toilet Cubicle**

- System Type: Floor to Ceiling Cubicle System
- Panel Material: 12mm / 18mm Compact Laminate (HPL)
- Overall, Height: Floor to Ceiling (Up to 2700mm – 3000mm)
- Door Height: Full Height Privacy Door
- Hardware Finish: SS 304 / Black Powder Coated Hardware
- Support System: Heavy Duty Aluminium / SS Headrail
- Edge Finish: Chamfer / Radius Edge
- Privacy Level: Maximum Privacy Design
- Water Resistance: 100% Waterproof & Anti-Bacterial
- Application: Premium Offices, Airports, Hotels, Malls & Commercial Washrooms

# SHOE BOX CUBICLE PARTITIONS



## SPECS

- ✓ 12mm Compact Laminate Board (HPL)
- ✓ SS 304 Grade Matt Finish Hardware
- ✓ Aluminium Anodized/Full SS 304 Framework
- ✓ Floor Touch & Headrail Supported System

## SS Hardware:

- SS Hinges
- SS Indicator Lock
- SS Knob Handle
- SS Coat Hook

**Standard Size:** • (D X W X H)  
1200 X 900 X 1900/2100)



# SHOE BOX NYLON CUBICLE PARTITIONS



## SPECS

- ✓ 12mm Compact Laminate Board
- ✓ Nylon Hardware
- ✓ Aluminium Black Anodized
- ✓ Floor Touch

## NYLON Hardware & Structure:

3 Self-Closing Hinges with Indicator  
Lock & Coat Hook

Adjustable Legs: 100–150 mm

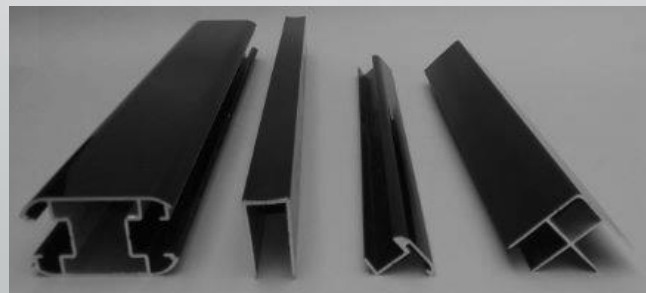
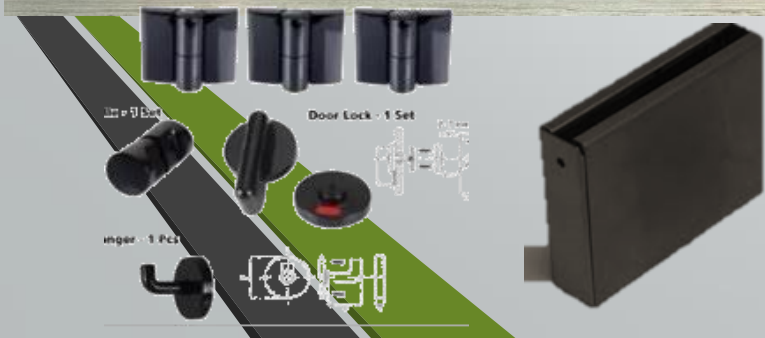
Powder Coated Top Rail

Aluminium H/U/F Profiles

Floor Mounted Box Up

## Standard Size:

- (D X W X H )  
1200 X 900 X 1900/2100)



# SS CUBICLE PARTITIONS



## SPECS

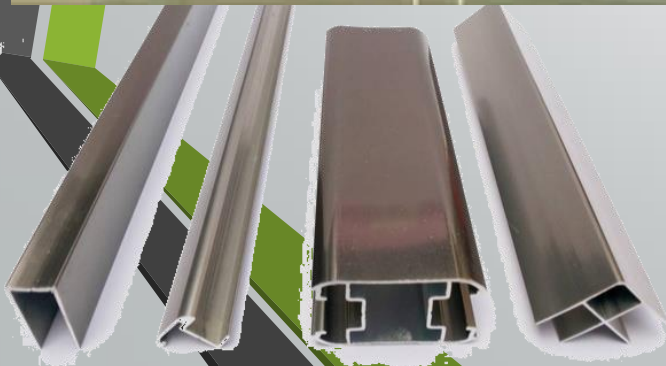
- ✓ Hardware: Stainless Steel
- ✓ Rust-free & Moisture Resistant
- ✓ Suitable for Wet Areas & High-Traffic Washrooms
- ✓ 3 Self-Closing Hinges with Indicator Lock & Coat Hook
- ✓ Adjustable Legs: 100–150 mm

## Structure:

- Powder Coated / Anodized Aluminium Top Rail
- Aluminium H/U/F Profiles
- Floor Mounted & Wall Supported System

## Standard Sizes:

- (D X W X H – 1200 X 900 X 2000)
- Bottom Gap: 150 mm
- ✓ Cost-Effective & Fast Installation & Long Lasting
- ✓ Custom Colors & Design Options Available



# KIDS TOILET CUBICLE



## Kids Toilet Cubicle Specifications

- Standard Size: 800mm(W) × 1200mm(D) X 1200H
- Door Opening: Inward / Outward
- Hardware: SS 304 Grade / Nylon Hardware
- Edge Finish: Black Chamfer / Radius Edge
- Leg Support: SS Adjustable Legs
- Recommended Age Group: 3–12 Years



# WITHOUT TOP SECTIONS CUBICLE



## SPECS

✓ 12mm Compact Laminate Board

✓ SS 304 Grade Matt Finish

Hardware

✓ Aluminium Anodized / Full SS

304 Framework

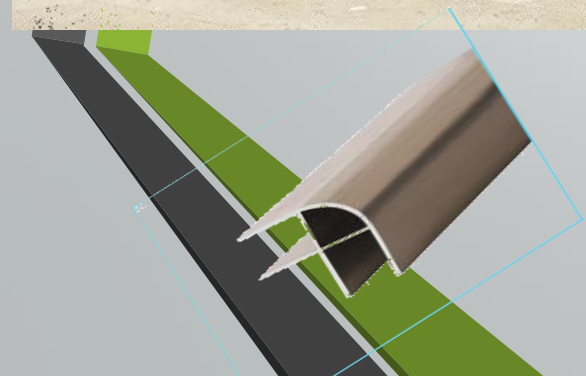
✓ Floor Touch

## SS Hardware:

- SS Hinges
- SS Indicator Lock
- SS Knob Handle
- SS Coat Hook

## Standard Size:

- (D X W X H – 1200 X 900 X 1900/2100)



# URINAL PARTITIONS

## Urinal Partition Specifications

- ✓ **Material:** 12mm Thick Compact Laminate (HPL) Board
- ✓ **Size:** 450/600 mm Width × 900/1200 mm Height (Customizable)
- ✓ **Edge Finish:** Black/Matching Chamfer Edge
- ✓ **Hardware:** SS 304 Grade Satin Finish Brackets & Fasteners
- ✓ **Mounting Type:** Wall Mounted
- ✓ **Color Options:** Multiple Shades & Wooden Finishes Available

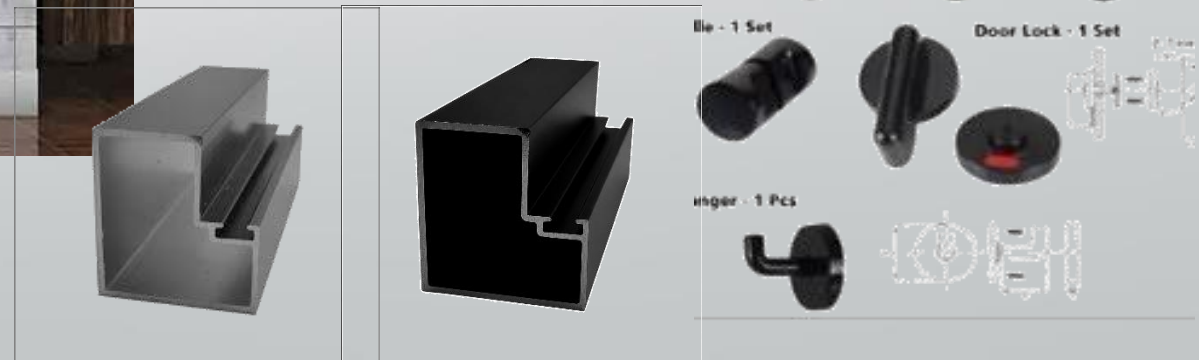


# POLE DOOR (PD DOOR)



## Specifications

- 12mm Compact Laminate
- SS 304 / Black Powder Coated Hardware
- Indicator Lock & SS Hinges, Coat Hook, PD Pole.
- Waterproof & Scratch Resistant
- Standard Height: 1830 / 2100mm
- Door Size: 600–700mm Width
- Bottom Clearance: 100mm–150mm
- Suitable for Offices, Malls & Commercial Washrooms



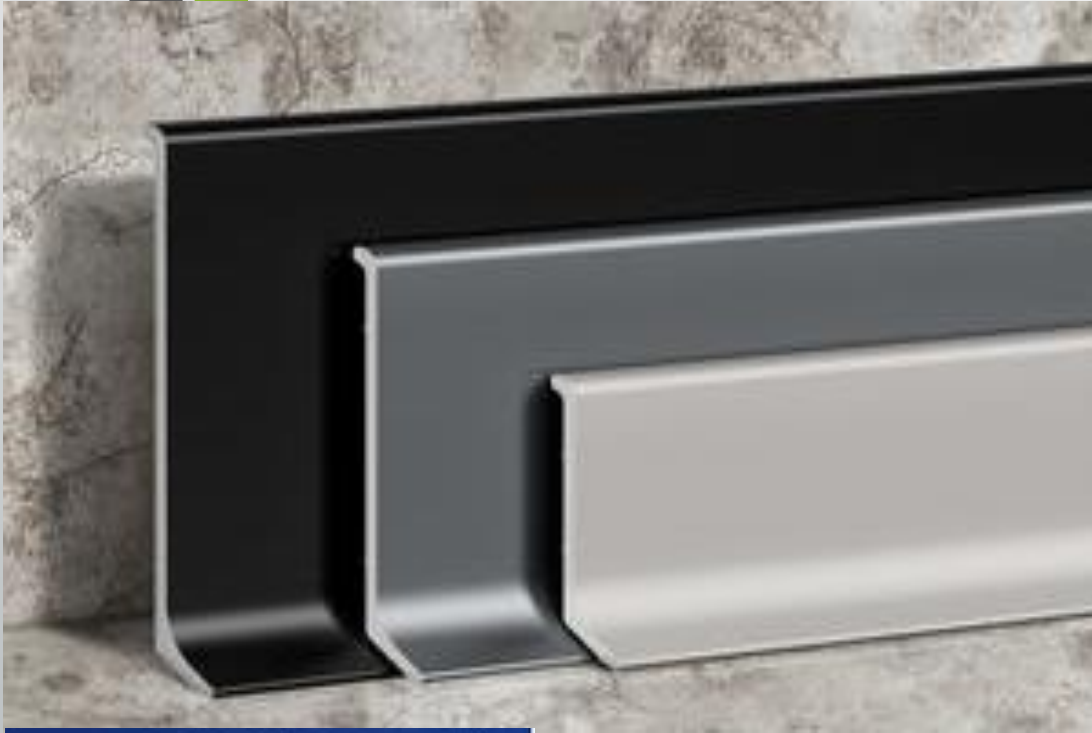
# Aluminium skirting profile

## Key Technical Specifications

- **Material Alloy:** Aluminium Alloy 6063 (T5 or T6 temper)
- **Thickness (Gauge):** Typically 1.5 mm (approx. 16 gauge)
- **Standard Lengths:** 3 meters to (10 feet)
- **Standard heights of 50mm, 60mm, 75mm, 100mm**
- **Surface Treatment:** Anodized (20+/-2.5 Microns) or Powder Coated (70 +/-10 Microns)
- **Color/Finish:** Silver (matte), black, or custom RAL powder-coated colors
- **Corners/End Caps:** Matching PVC or aluminum accessories

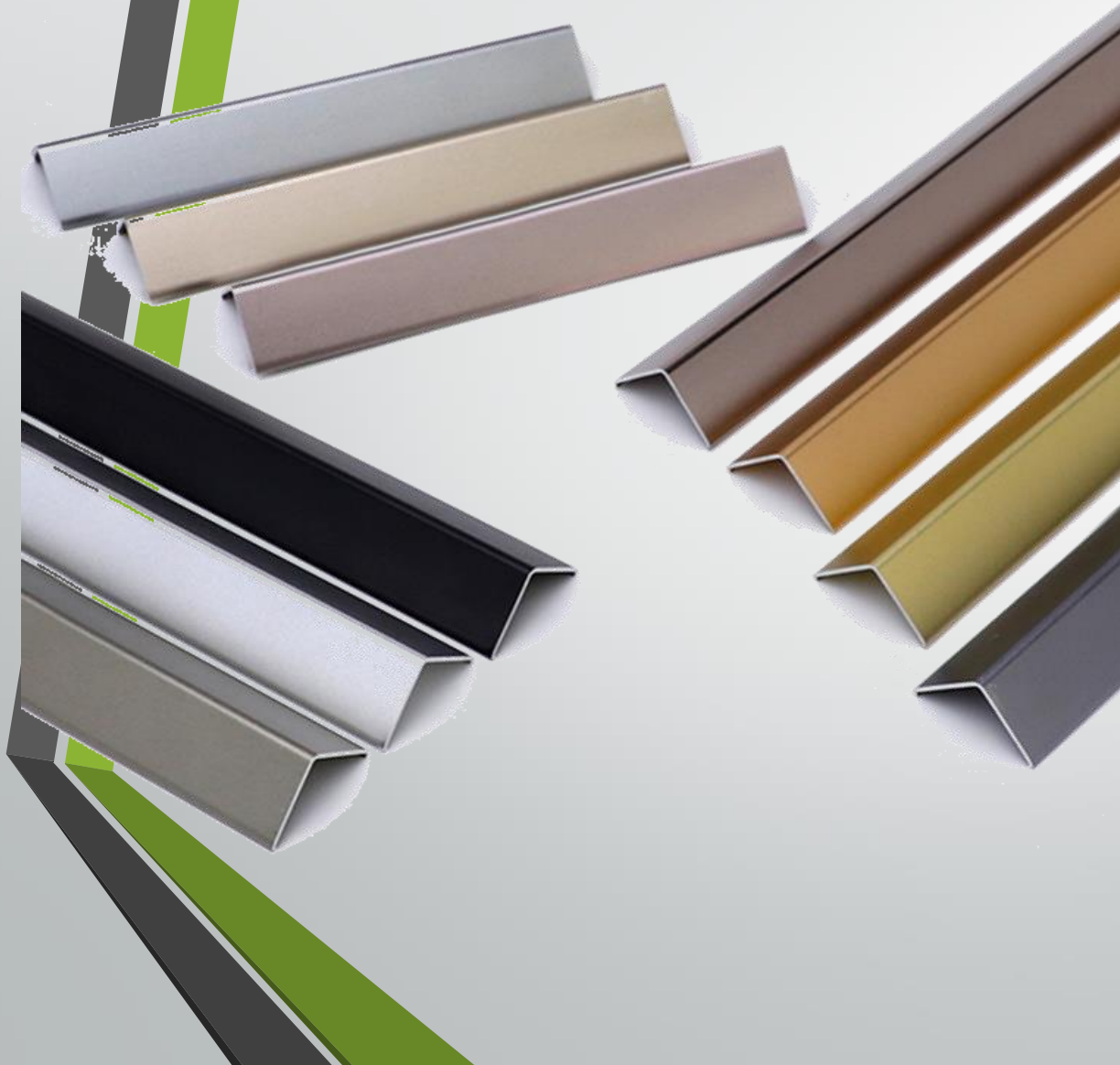


# Stick skirting profile 60 & 80mm



Finish types	Anodised · Powder coated · PVD coated · Mill finish/Black/SS
Powder coat	TGIC Polyester — 60–80 microns thickness
Anodising	Class 1 (25 microns) · Class 2 (15 microns)
PVD coating	0.3–0.5 microns — mirror & satin finish
UV resistance	Excellent — no fading or yellowing
Scratch resistance	High — suitable for high traffic areas

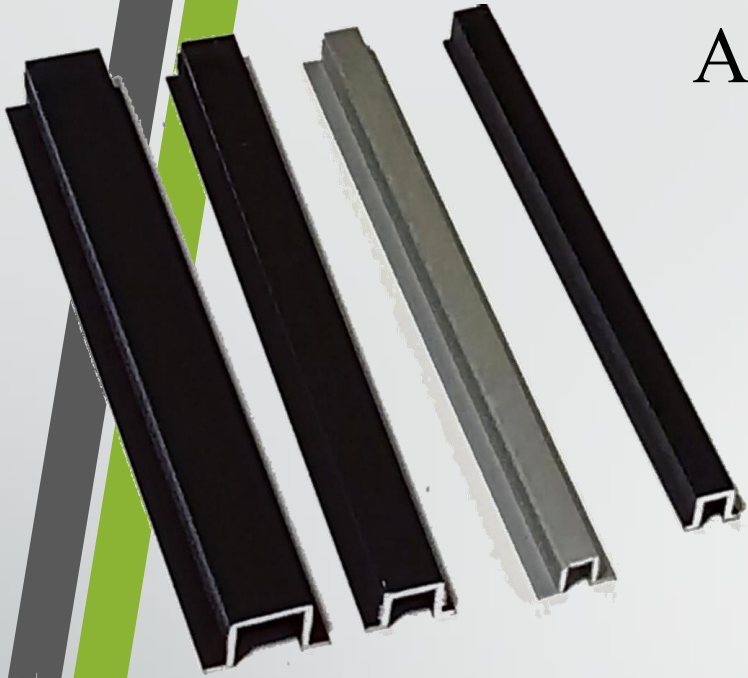
# ALUMINIUM L SECTION (CORNER PROFILE)



## **Aluminium Profile Specifications**

- Material: Premium Grade Aluminium
- Finish Options: Silver / Black / Gold / Champagne / Bronze
- Profile Type: Edge / Corner / Connector Profile
- Surface Finish: Powder Coated / Anodized
- Rust Proof & Corrosion Resistant
- Smooth Edges with Modern Look
- Suitable For: Toilet Cubicle Partitions, HPL Panels & Modular Washrooms
- Easy Installation & Long-Life Durability
- Available in Multiple Sizes & Colours

# ALUMINIUM HAT SECTION



## **Hat Section Aluminium Profile**

- Used for joining
- Provides strong grip and clean joint finishing between panels
- Commonly used in toilet cubicle partitions & wall cladding systems
- Ensures proper panel alignment and stability
- Made from premium-grade aluminium extrusion
- Powder Coated / Anodized Finish
- Rust Proof, Water Resistant & Corrosion Resistant
- Easy installation with modern appearance



# TRIM PROFILE SS AND ALUMINIUM BOATH



## T SHAPE ALUMINIUM

SKU : T SHAPE ALUMINIUM  
AVAILABLE SIZES (6)

8x8.9mm

12x6mm

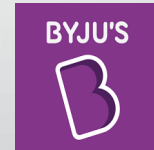
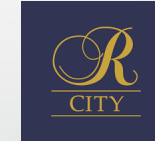
12x8.9mm

15x8.9mm

20x8.9mm

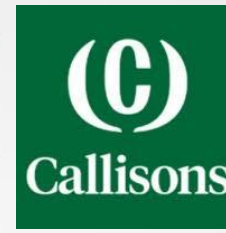
25x8.9mm

# OUR RAPUTED CLIENTS

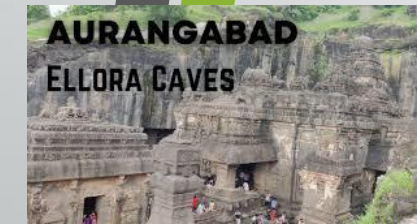




TATA CONSULTING ENGINEERS  
ENGINEERING A BETTER TOMORROW™



Paramount Health  
Your link to good health



VFS.GLOBAL



Knowledge Alone Liberates  
ज्ञानदेव तु कैवल्यम्  
Somaiya Vidyapeeth

adani

Chhatrapati Shivaji Maharaj  
INTERNATIONAL AIRPORT  
MUMBAI



Rubicon  
RESEARCH  
INNOVATION | QUALITY | CARE

Universal Edu-Infra  
Services Pvt. Ltd.



KALYANI  
JEWELLERS

VIACOM 18  
STUDIOS

Rustomjee  
PROJECTS

ORCHIDS  
The International School

VOYA  
INDIA

Futures  
First

ST Telemedia  
Global Data Centres

DYNAMIC  
electrical  
grooming . health & beauty

TRICON  
INFRA BUILDTECH PVT. LTD.

FDA MAHARASHTRA  
FOOD AND DRUG  
ADMINISTRATION

CCH  
CHINCHPADA CHRISTIAN HOSPITAL  
Love your Neighbour

FALCON  
BUS LINES PVT. LTD.

WITTY  
INTERNATIONAL  
SCHOOL

INDIA

micro  
master

MAX  
HEALTHCARE

VISAKHA  
PHARMACY  
LIMITED  
a winning destination

INDIRA IVF  
FERTILITY & IVF CENTRE

TEXAS  
INSTRUMENTS

ORIGIN  
TRUST | EXPERTISE | EXPERIENCE

SPAL  
AUTOMOTIVE INDIA

zydus  
Hospitals  
Vadodara

MARUTI  
SUZUKI

GEO  
CHEM  
Geo Chem Laboratories Pvt. Ltd

accenture



essenzaa  
NUTRITION



# Interior Solutions

*We are सक्षम in work*

Smart Partition Solutions  
for Smarter Restrooms

Modular Toilet Cubicles · Changing Rooms  
Shower Rooms · Pole Door · Urinal Partitions  
HPL Boards · Aluminium Sections & Profiles

[www.cubicleinteriorsolutions.com](http://www.cubicleinteriorsolutions.com)

## LOOKING FORWARD TO YOUR VALUED ORDER

Contact Person

**Nisha Jaiswal**

Phone / WhatsApp

**+91-9757054670**

Email

**nishainteriorsolutions@gmail.com**

Website

**cubicleinteriorsolutions.com**

Service Area

**Pan India IN**



**GLAD TO HANDSHAKE WITH YOUR  
ORGANIZATION**

© 2025 Interior Solutions | Company Profile 2025–2026